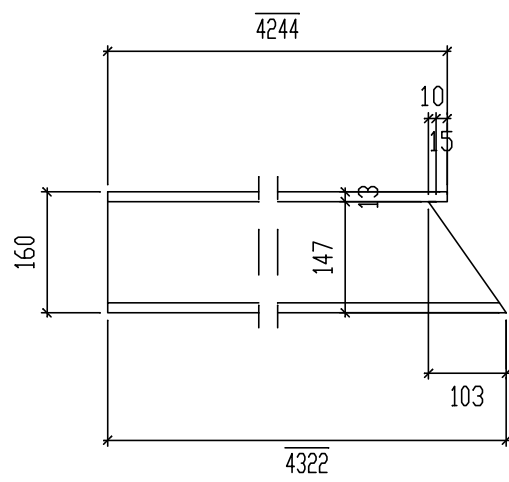


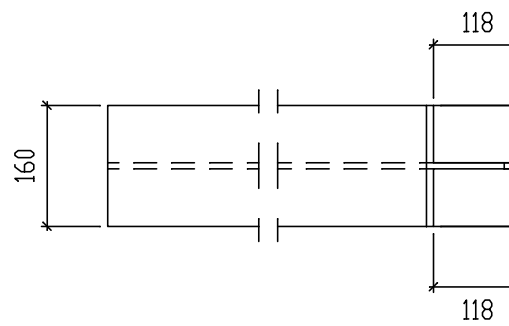
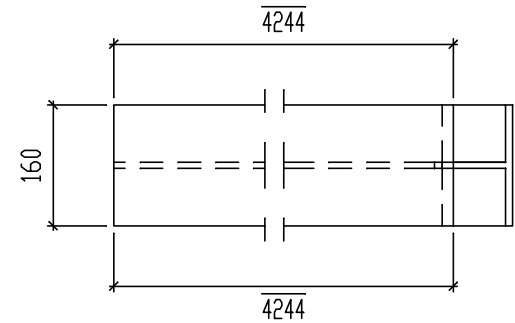
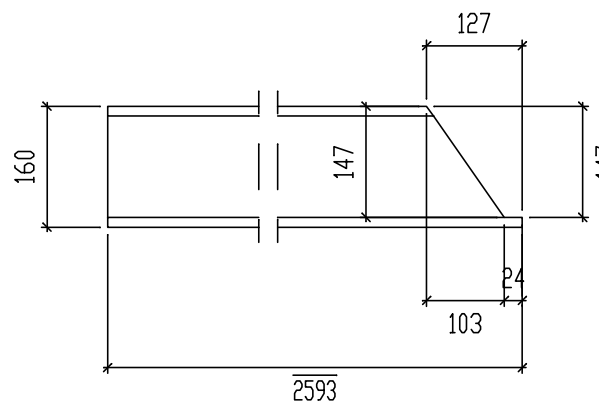
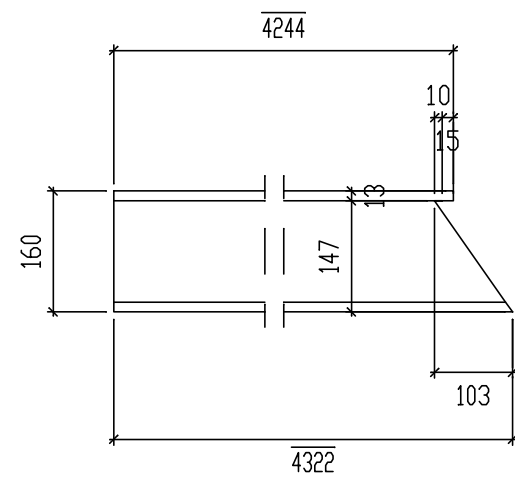
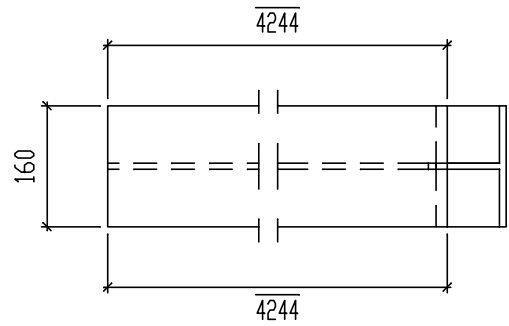
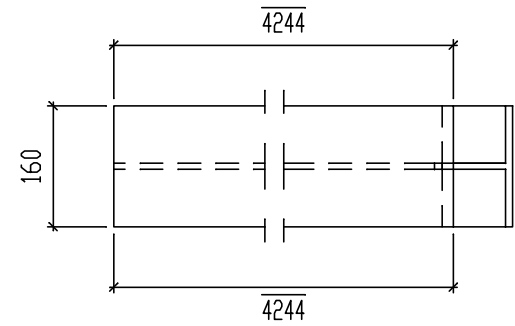
1 x Poz. 1

HEB160 - S235JR L=4322



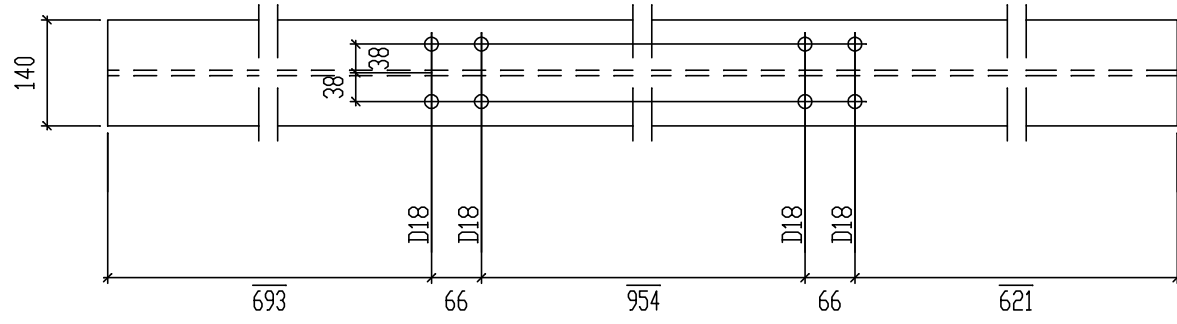
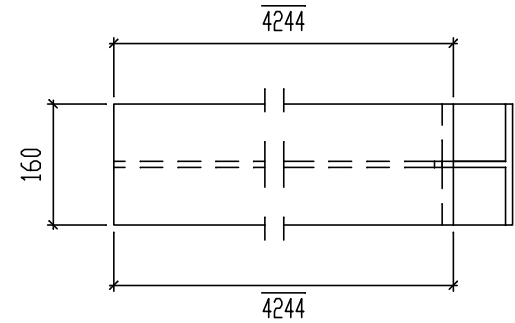
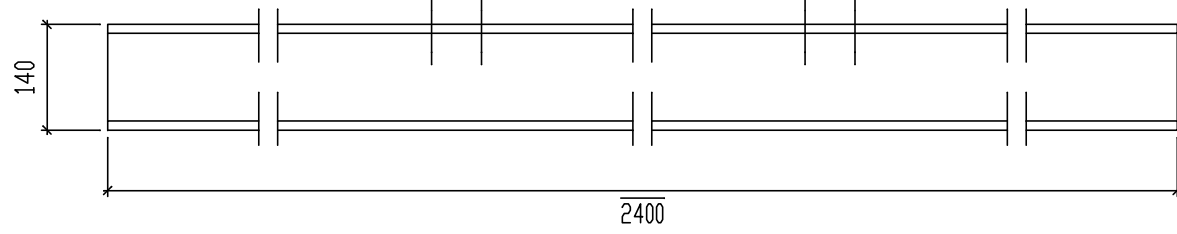
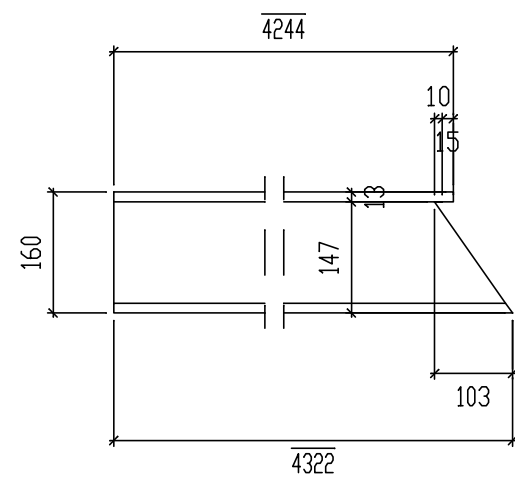
1 x Poz. 5

HEB160 - S235JR L=4322



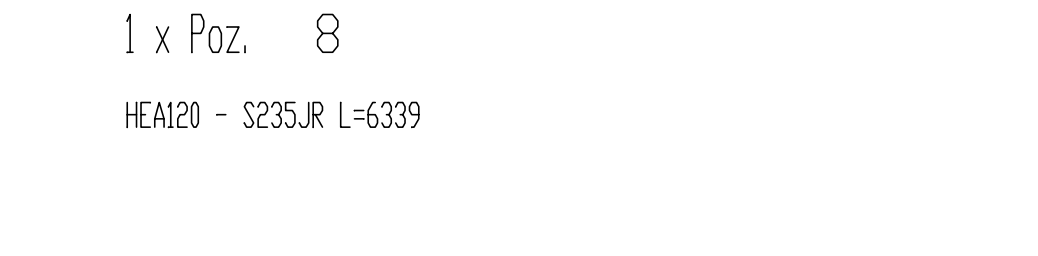
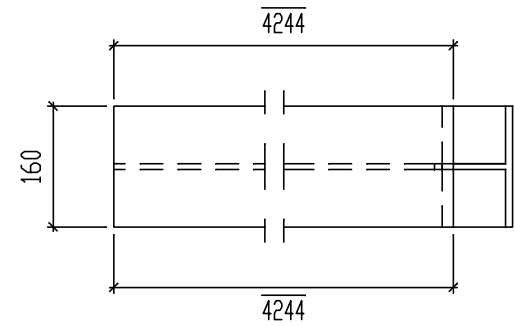
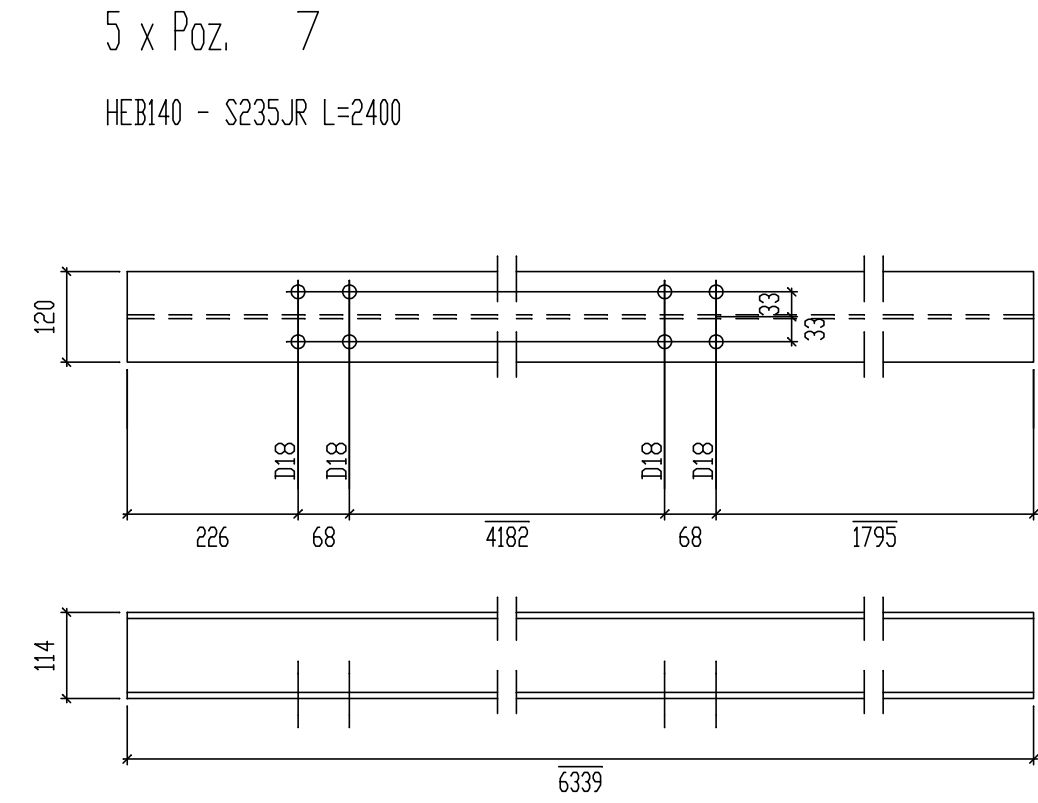
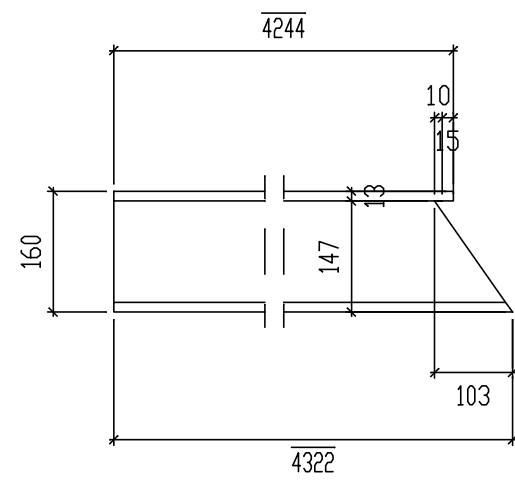
1 x Poz. 2

HEB160 - S235JR L=4322



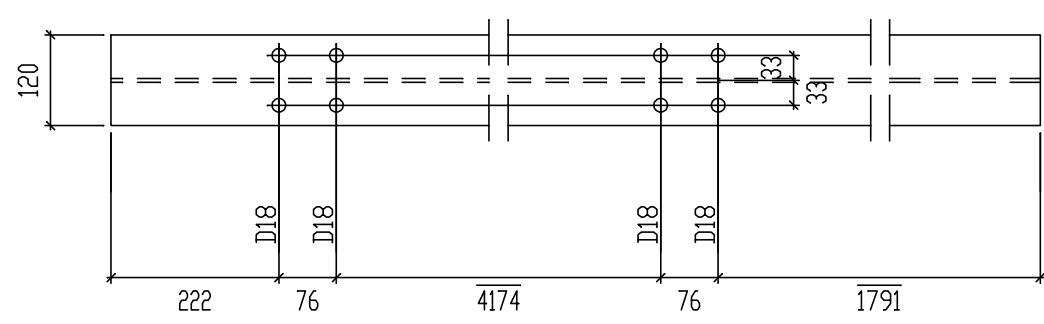
1 x Poz. 3

HEB160 - S235JR L=4322



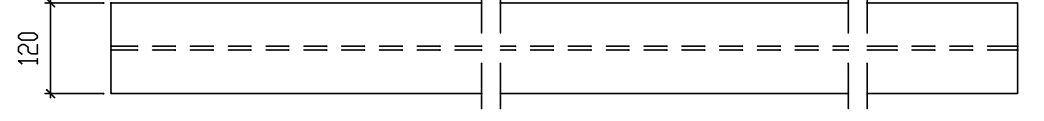
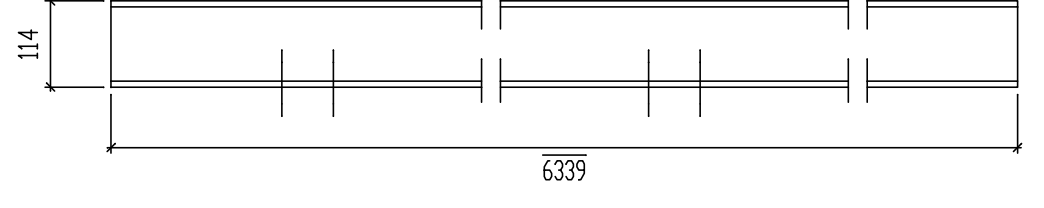
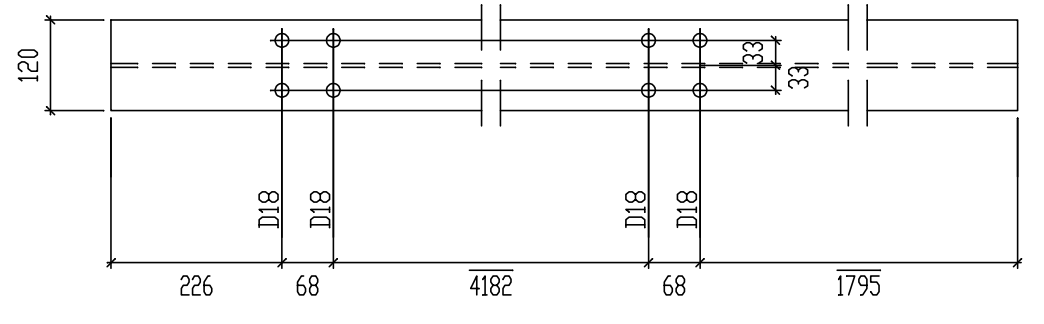
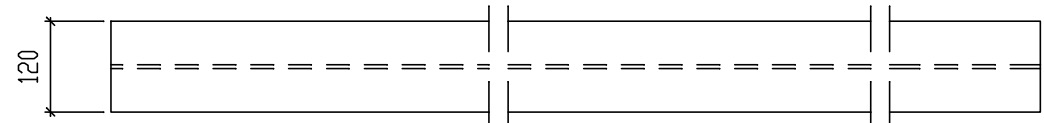
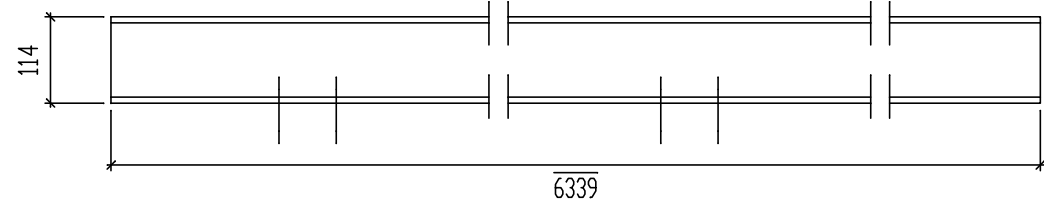
1 x Poz. 4

HEB160 - S235JR L=4322



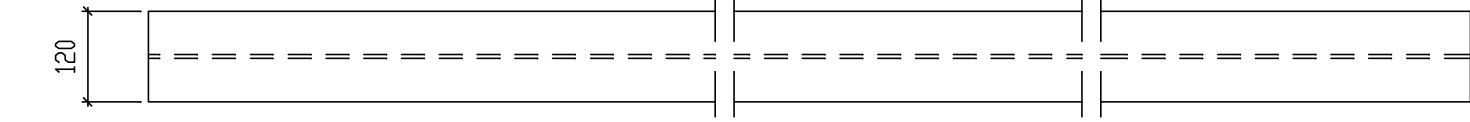
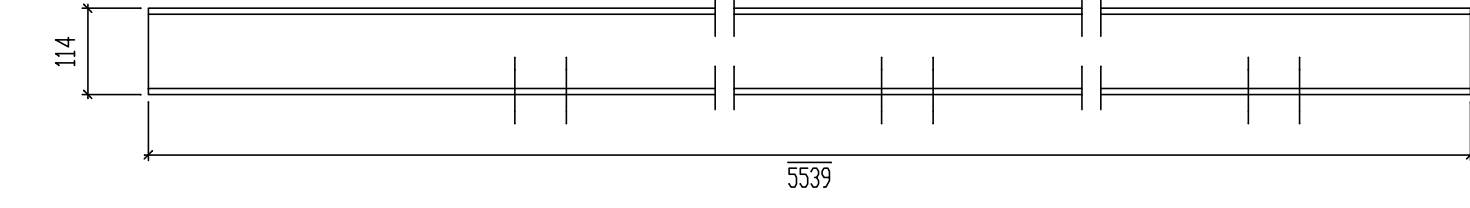
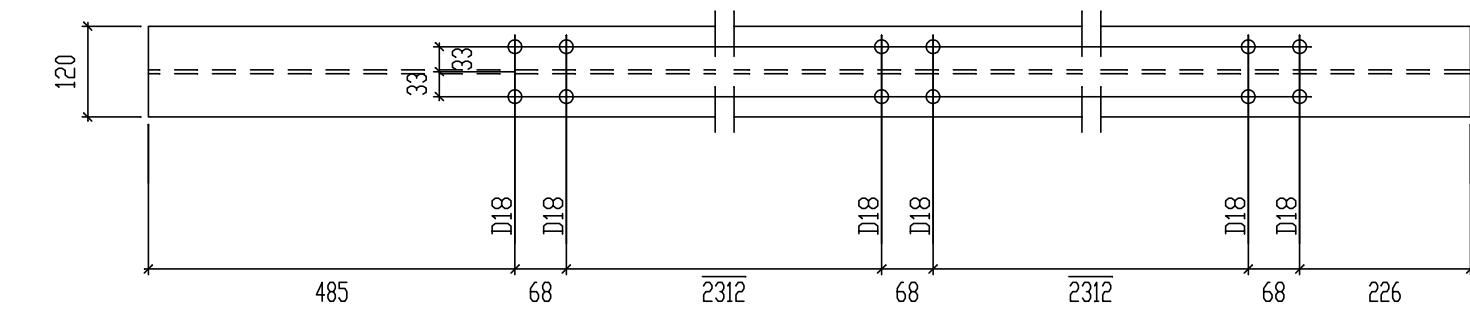
2 x Poz. 9

HEA120 - S235JR L=6339



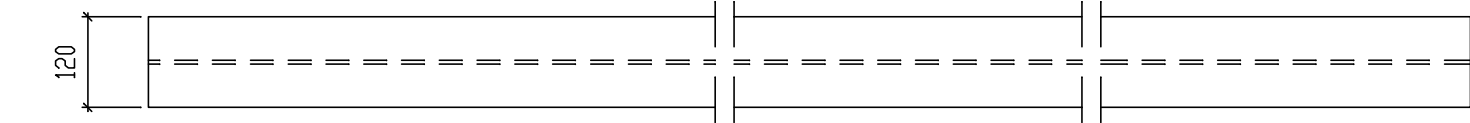
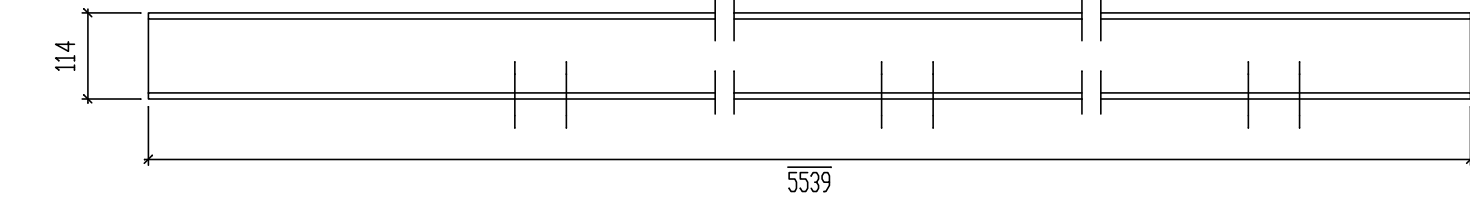
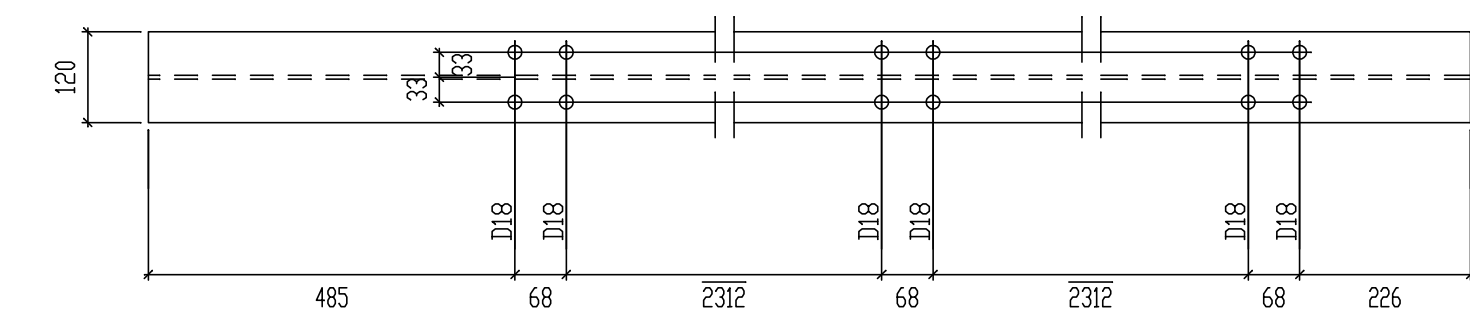
1 x Poz. 10

HEA120 - S235JR L=6339



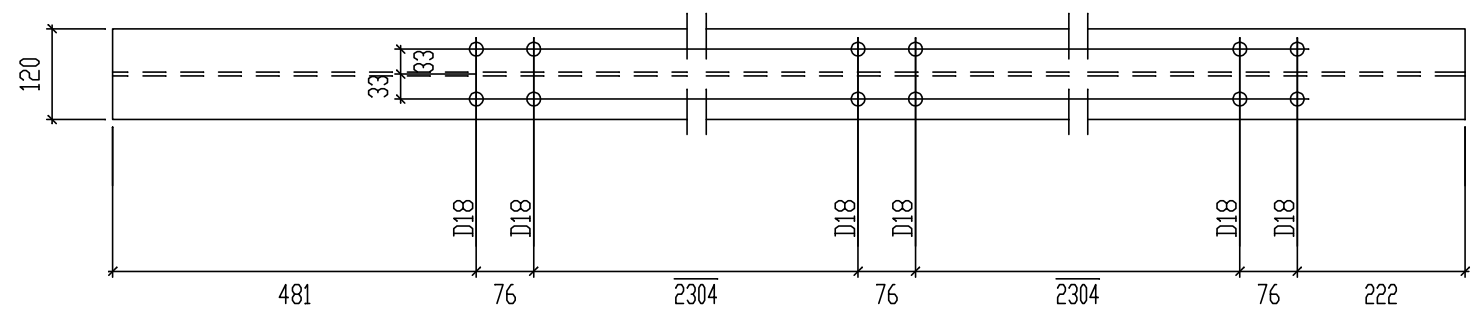
1 x Poz. 11

HEA120 - S235JR L=5539



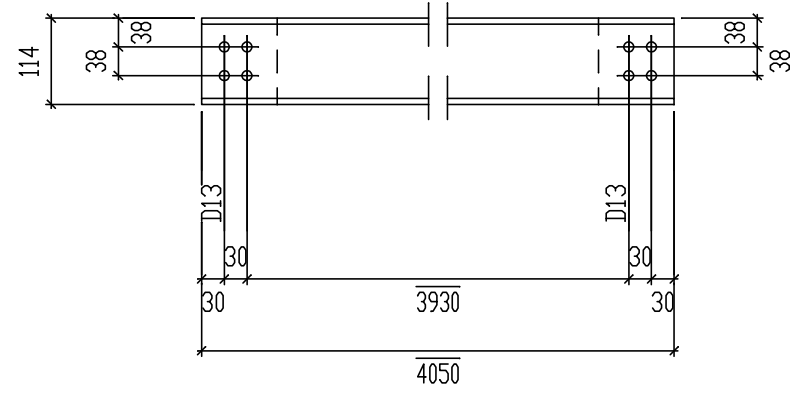
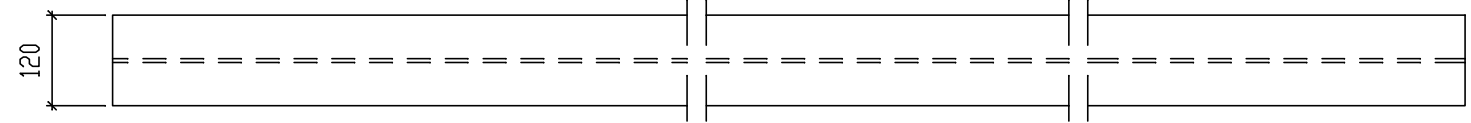
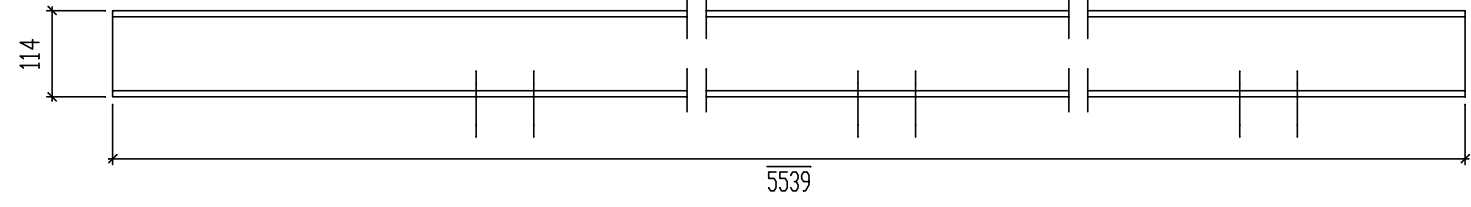
1 x Poz. 12

HEA120 - S235JR L=5539



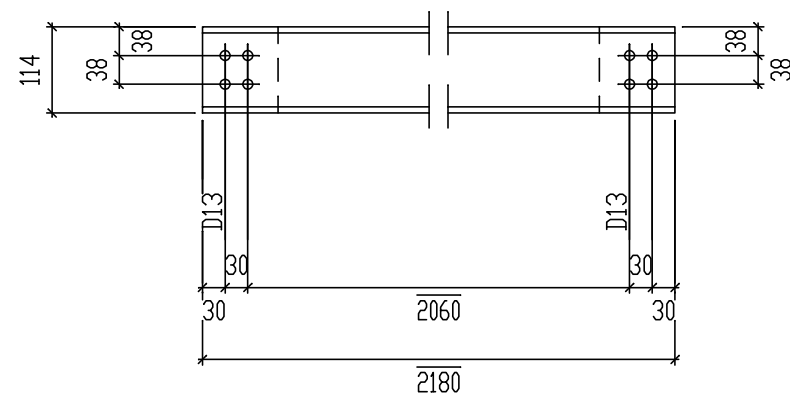
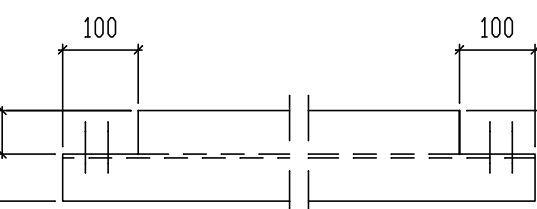
2 x Poz. 13

HEA120 - S235JR L=5539



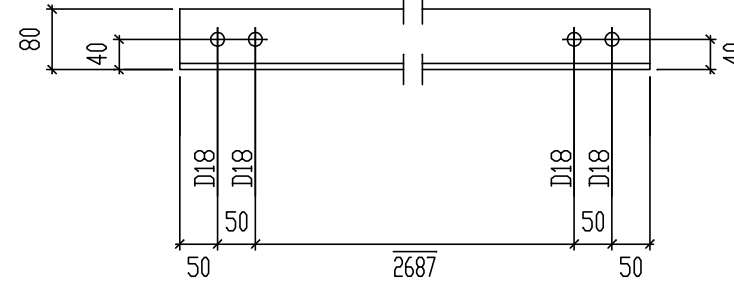
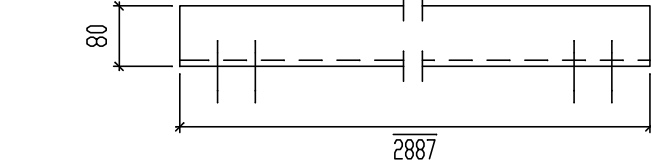
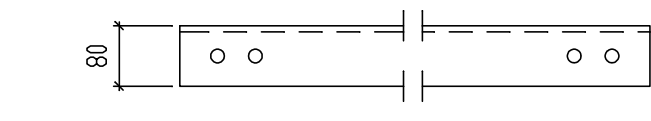
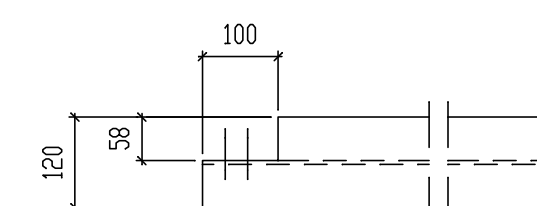
1 x Poz. 14

HEA120 - S235JR L=4050



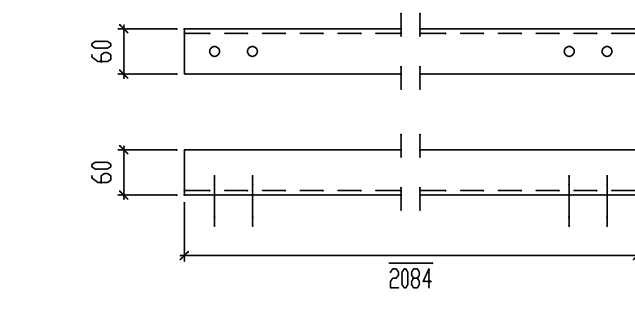
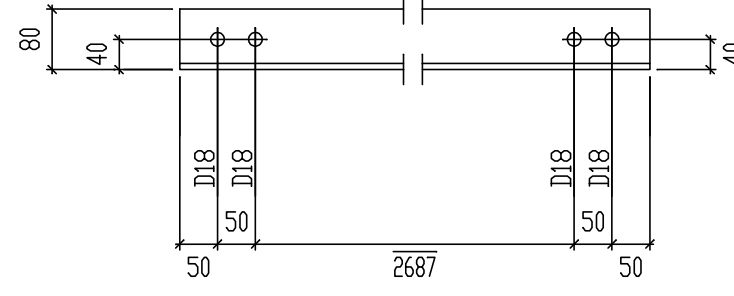
3 x Poz. 15

HEA120 - S235JR L=2180



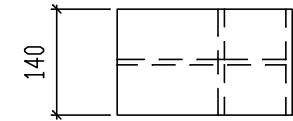
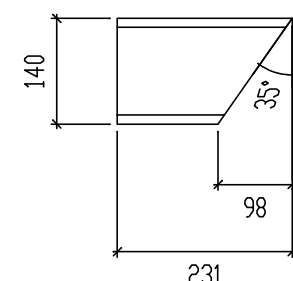
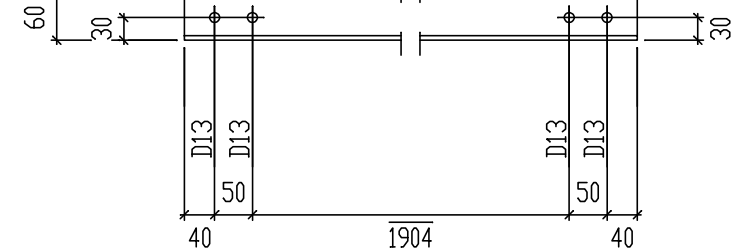
2 x Poz. 16

L80*8 - S235JR L=2887



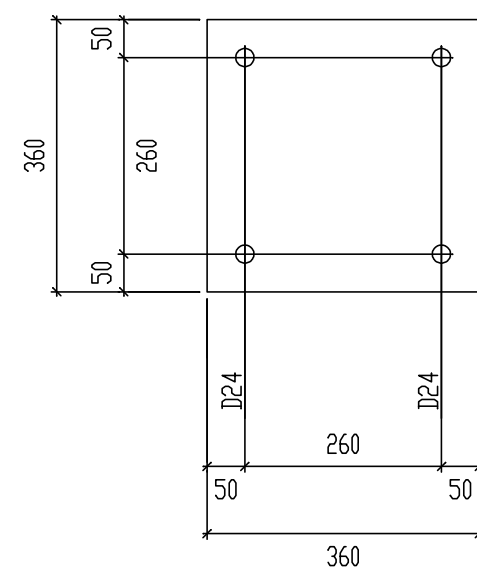
6 x Poz. 17

L60*6 - S235JR L=2084



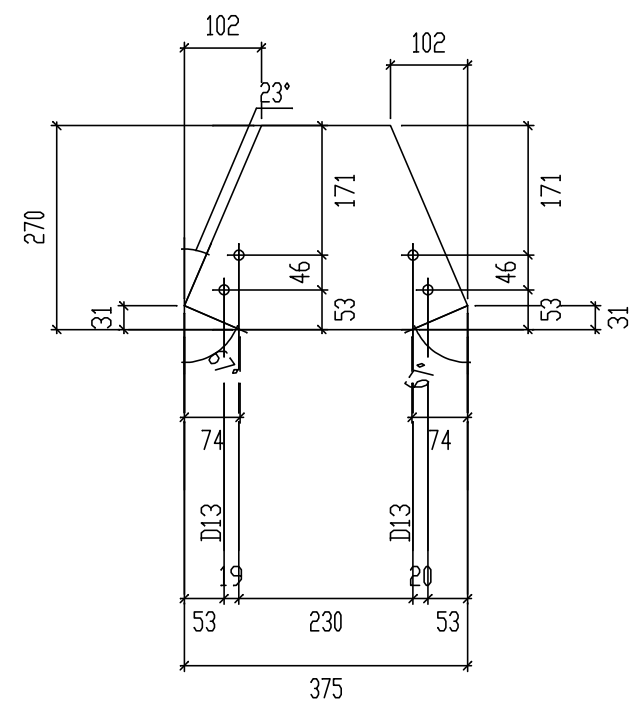
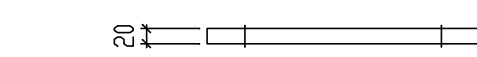
10 x Poz. 1000

HEB140 - S235JR L=231



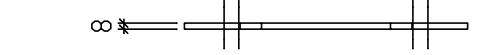
10 x Poz. 1001

PL20*360 - S235JR L=360



4 x Poz. 1002

PL8*270 - S235JR L=375



- UWAGI :
1. Stal S235JR wg PN-EN 10025-2, Attest 2.2
 2. Warunki wykonania i montażu wg PN-EN 1090:2 Wykonanie konstrukcji stalowych i aluminiowych. Część 2: Wymagania techniczne dotyczące wykonania konstrukcji stalowych. Klasa wykonania konstrukcji stalowej – EXC 2. Kategoria produkcji: PC 2.
 3. Elementy spawać na całej długości złącza.

ECOKUBE TECHNOLOGIE OCHRONY ŚRODOWISKA			
EcoKube Sp. z o.o. ul. Wólczańska 128-134, 90-527 Łódź			
Investor: Podziałekie Przedsiębiorstwo Komunalne Sp. z o.o. ul. Tysiąclecia 35A, 34-100 Nowy Targ	Brandz:	Faza:	
Nazwa inwestycji: "Opracowanie dokumentacji projektowo-kosztorysowej Modernizacji oczyszczalni ścieków w Trybszu"	konstrukcja	P.B.	
Tytuł rysunku: Wiatra stalowa - konstrukcja	Skala:	Data:	
Projektował: mgr inż. Romuald Chomiczewski	Nr uprawnień: 413/73/Lw	1:10	
Opracował: mgr inż. Piotr Ignaszczak	ŁOD/BO/0039/16	04.2016	
Sprawił: mgr inż. Andrzej Sobczak	233/89/WŁ	19	